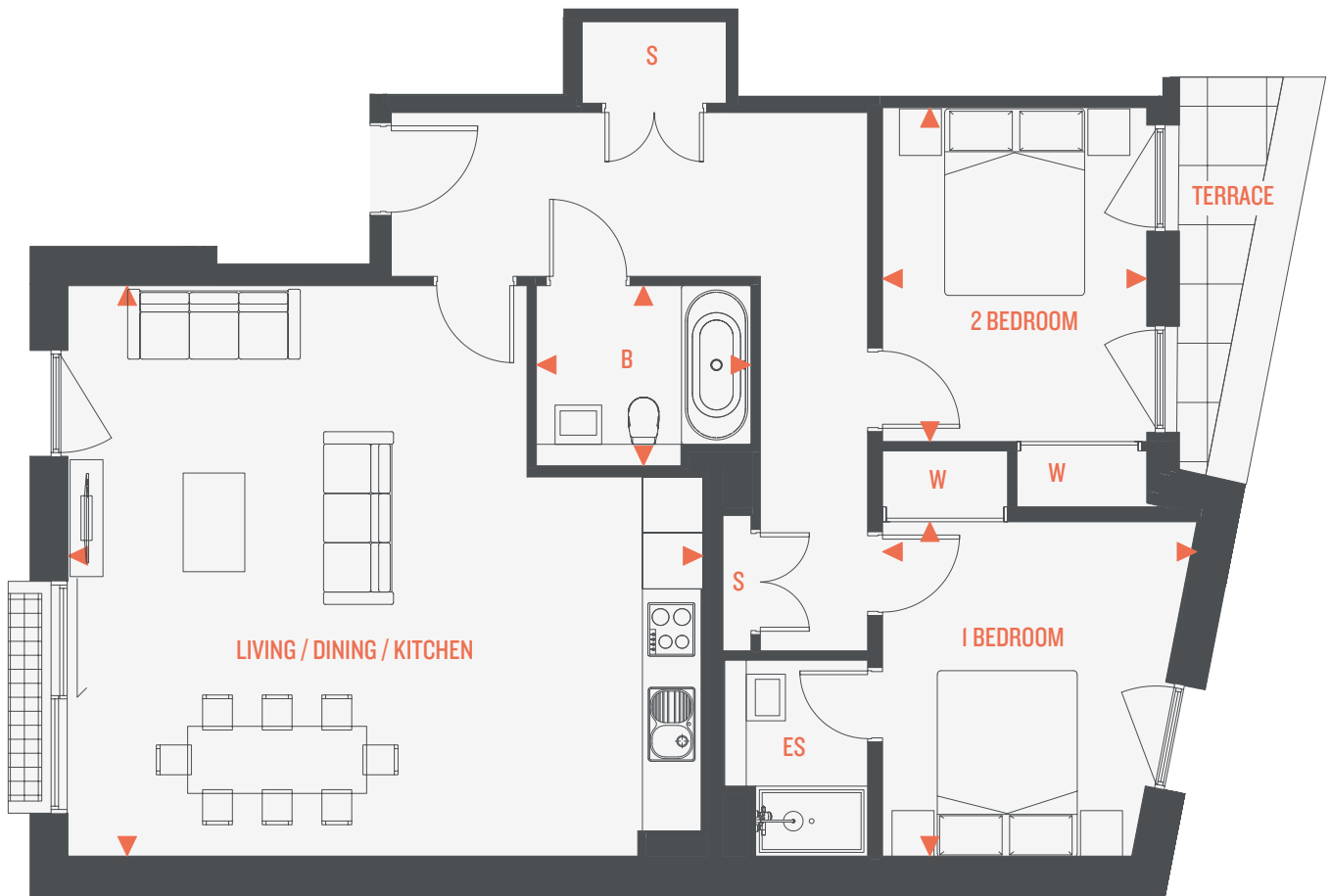
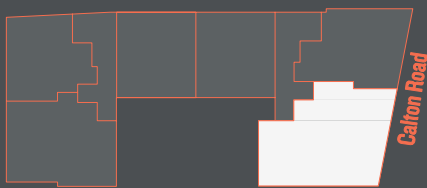


APT. 26/11

Two Bedroom | Fourth Floor
Total Area: 88m² (947ft²)



LOCATION



DIMENSIONS

LIVING / DINING / KITCHEN	6.75m x 6.01m	(22'2" x 19'8")
BEDROOM I	3.32m x 3.53m	(10'7" x 11'7")
BEDROOM 2	2.78m x 3.53m	(9'1" x 11'7")
BATHROOM	2.30m x 1.93m	(7'7" x 6'4")
TERRACE	1.11m x 4.27m	(3'6" x 14'0")

S	Storage	B	Bathroom
W	Wardrobe	ES	Ensuite
U	Utility	▶	Entrance